



# Healthy Porirua Project



## Project Purpose

To apply an integrated approach to improving health and well-being in a particular community:

- better responding to community priorities
- working with other agencies better
- working within RPH better



## Why Porirua East?

Population: 48,546

- “ Maori 20.9%
- “ Pacific 26.6%

Eastern Porirua:

- “ Maori 25.8%
- “ Pacific 56.1%
- “ High Deprivation
- “ Low Decile Schools
- “ Negative Social and Physical Environments
- “ Vibrant and diverse communities

Particular focus on Waitangirua



## Major Themes

- “ Community priorities
- “ Internal service-wide collaboration
- “ External stakeholders collaboration
- “ Better coordinated approaches



## Project Action Areas

- “ Access to Healthy Food
- “ Housing
- “ Safety and Connectedness
- “ Access to Services and Facilities
- “ Access to Income

**Steering Group**

**Project Leader**

**Action Area Leaders**

**Action Area Groups x 5**

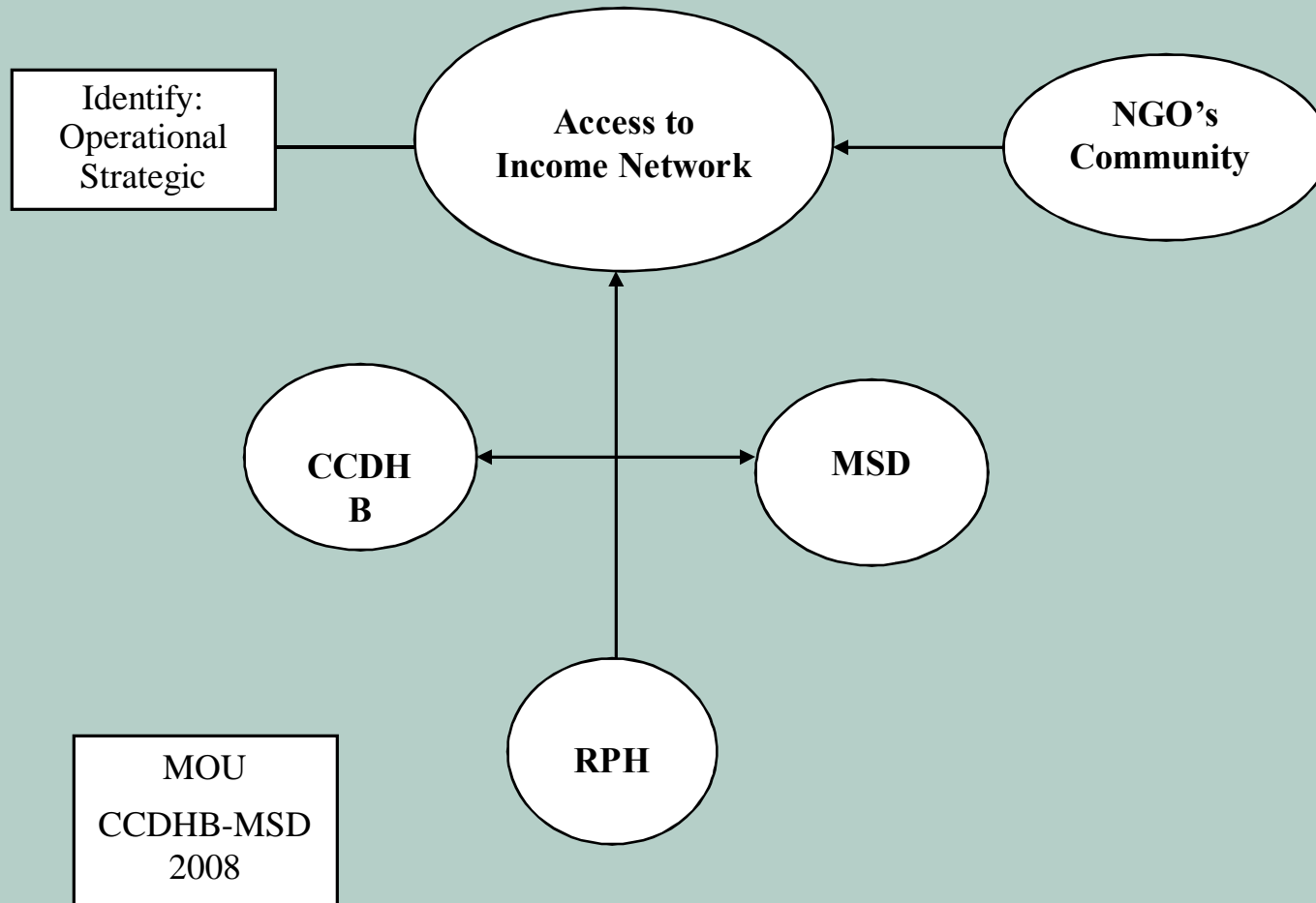


## Access to Services and Facilities

- “ Waitangirua Providers Forum
- “ LTCCP
- “ Recession . spending cuts
- “ Unfunded items
  - I. Maintenance on road, footpaths etc
  - II. Waitangirua park
- “ Written & oral submissions
- “ Changed to funded

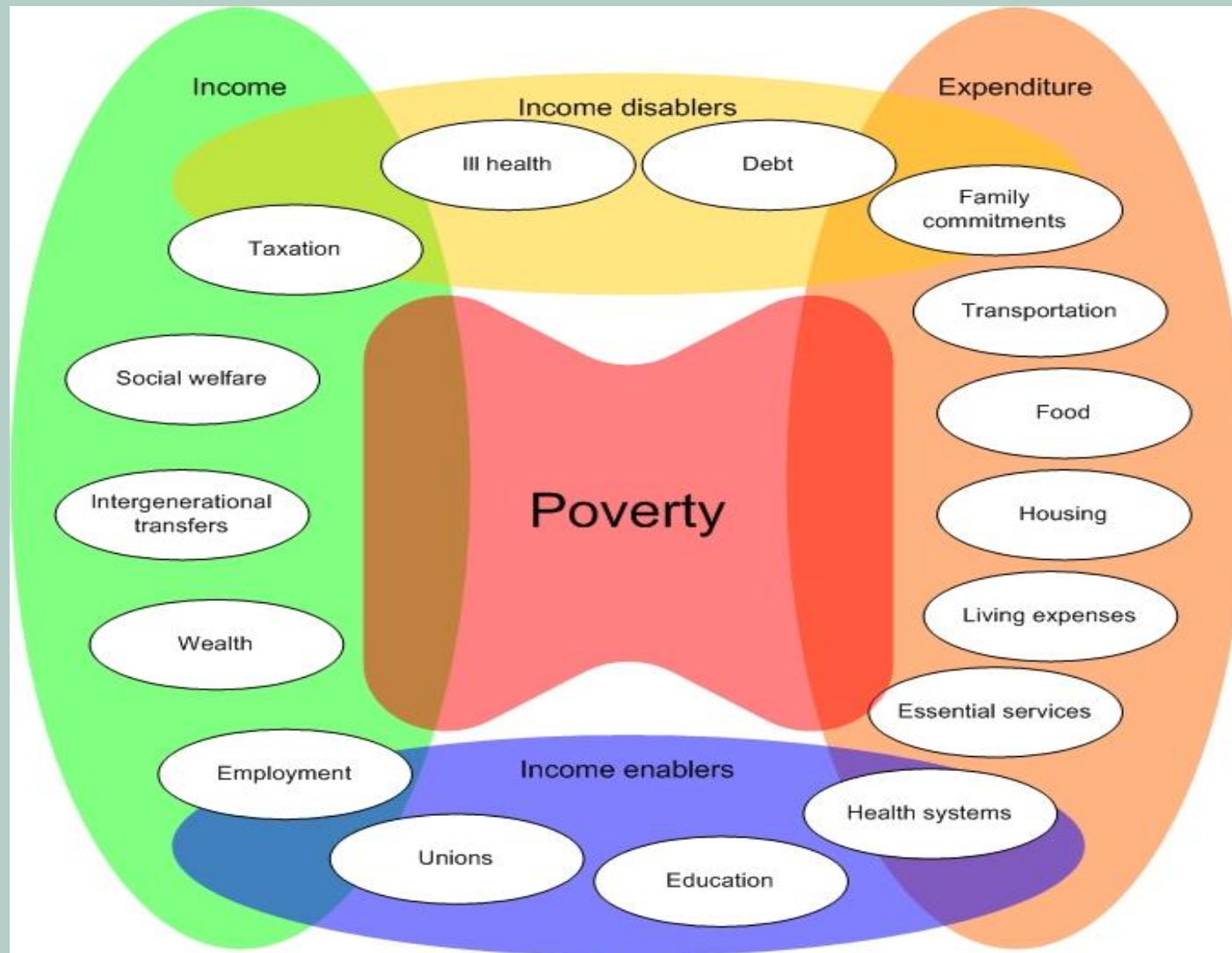


## Access to Income





## Income Centric Poverty







## Recession Scenario

- “ Employed man . wife, 2 children
- “ Renting privately
- “ \$300 a week wages, \$200 a week W FF
- “ Loses job
- “ Looses \$300 + \$200
- “ UB \$160 + ASUP \$140
- “ Pays rent . what left
  
- “ Increase in suicide



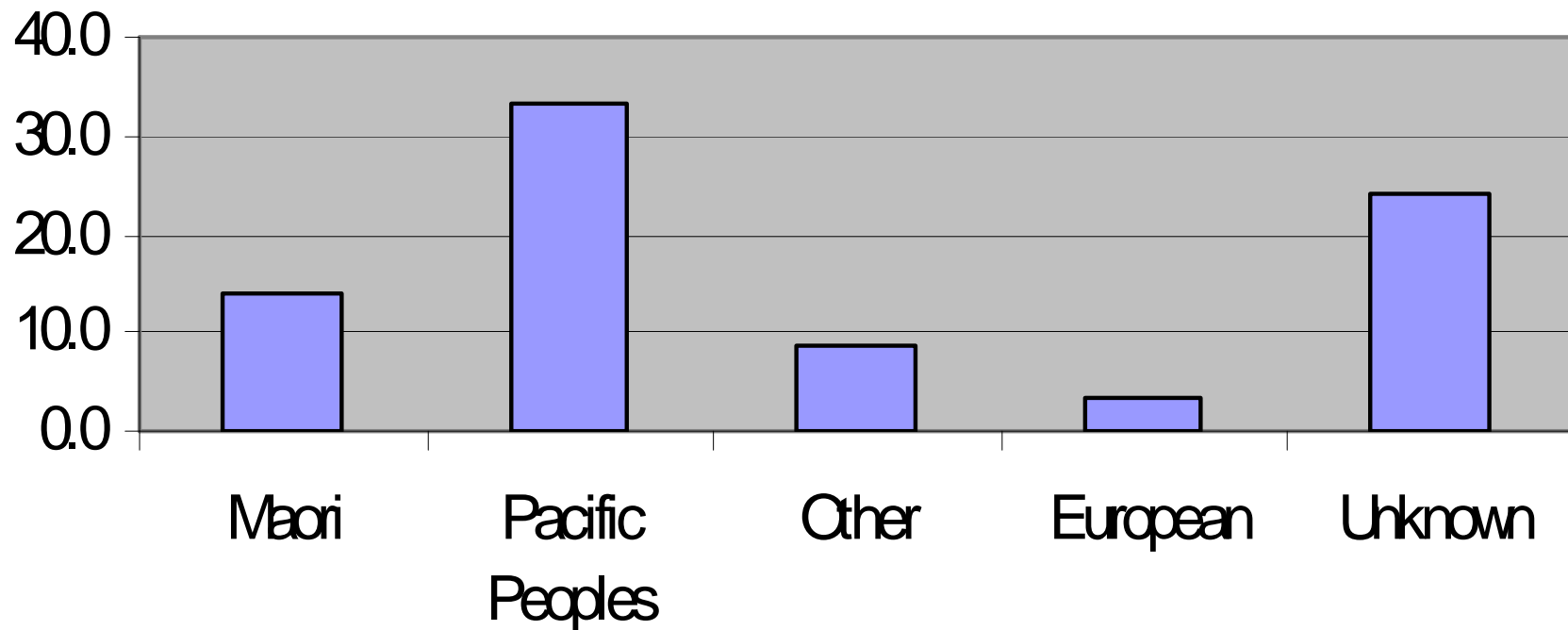
## Swine Flu

- “ Vulnerable communities project
- “ Getting the message out
- “ Workshops for community worker, nurses etc
- “ Surveillance report



## By Ethnicity

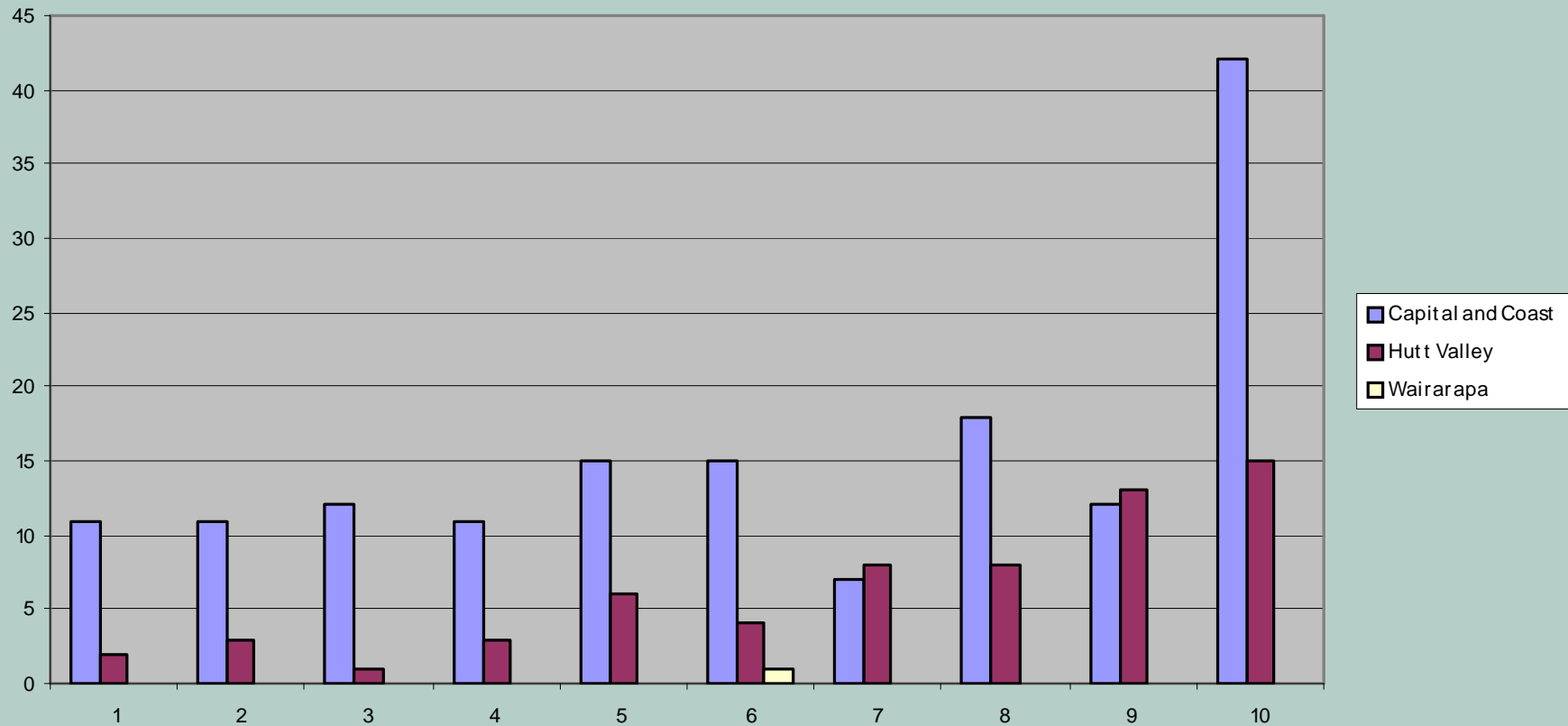
**Confirmed cases of H1N1 Influenza by prioritised ethnicity: Rate per 10,000 Wellington region as at July 3, 2009**





## By the New Zealand Deprivation Index

Confirmed cases of H1N1 influenza June 20 - July 3, 2009





## The Recession and Vulnerable Communities

